

# How to use eye drop glasses

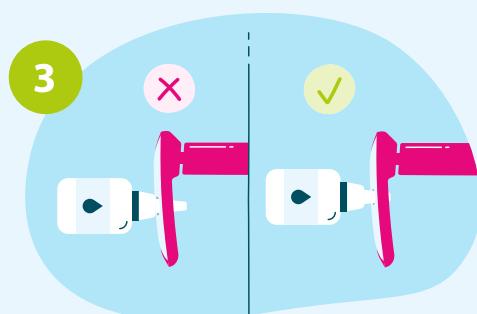
Read before use.



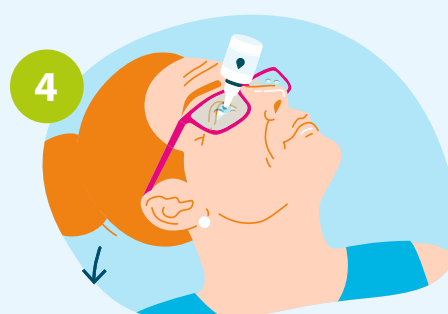
Check that the eye drops are still usable.



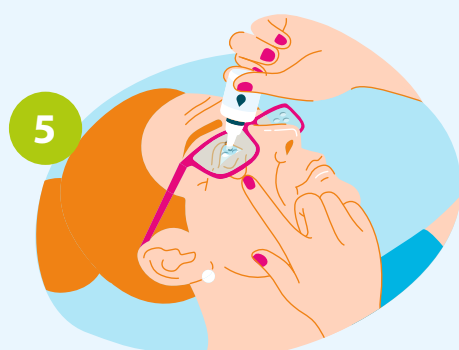
Wash your hands and the eye drop glasses.



Place the bottle in the hole that fits best. The bottle should not protrude further than 1 cm.



Put the glasses on and bend your head back as far as possible (90°).



Pull your eyelid down, keeping your eye open. Squeeze the bottle.



Take off the glasses. Press the inner corner of the eye for 1 minute. Clean the glasses.

